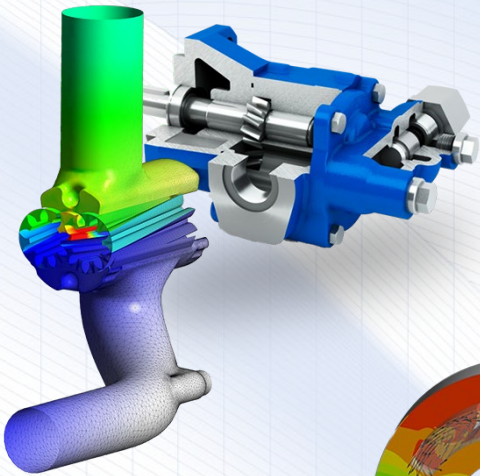
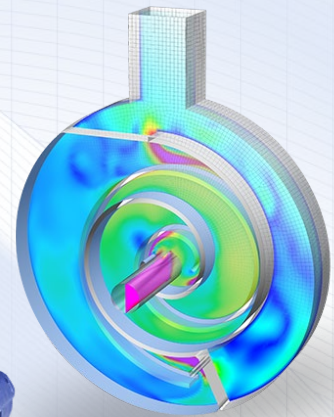


## Examples for reliable CFD analysis of rotary positive displacement machines

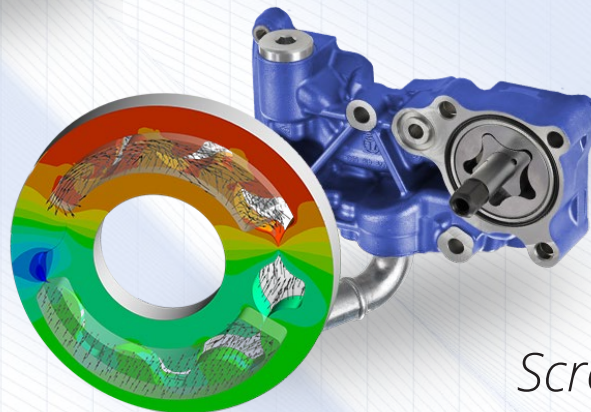
*Gear pumps*



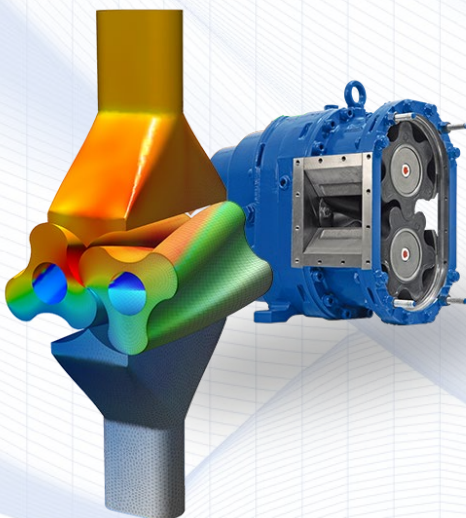
*Scroll compressors*



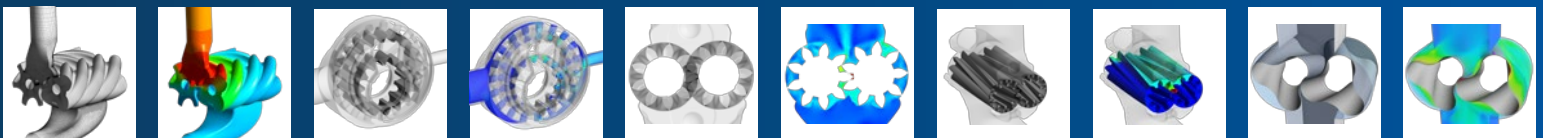
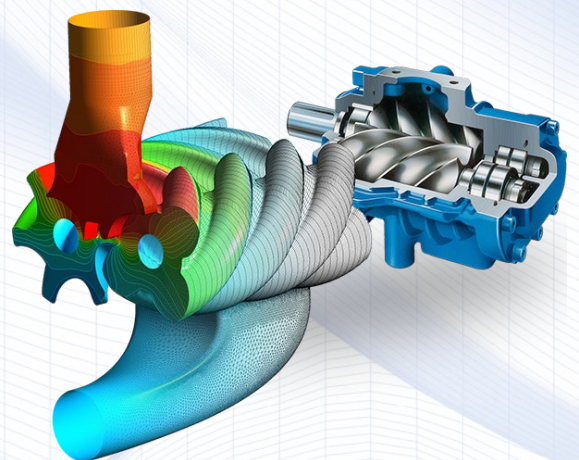
*Gerotor pumps*



*Lobe pumps*



*Screw compressors*



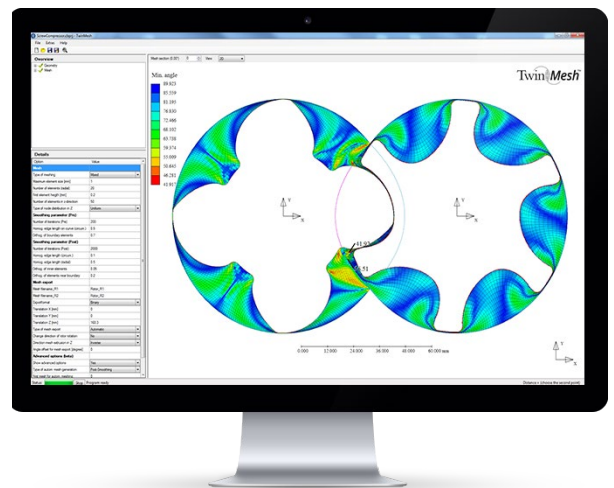
## Automatic generation of high quality hexahedral meshes for rotary positive displacement machines

*fast – reliable – efficient*

- ✔ TwinMesh provides an automated workflow for structured mesh generation and CFD analysis setup with ANSYS CFX
- ✔ High resolution and high quality numerical grids
- ✔ Avoids interpolation errors
- ✔ Allows the usage of the full range of physics available in ANSYS CFD
- ✔ Structured grids allow for reasonable transient CFD model size
- ✔ Quality check options assure maximum numerical quality

# ANSYS®

*TwinMesh works seamless with ANSYS. It exports meshes and simulation setup directly to ANSYS CFX. TwinMesh is developed by CFX Berlin and built on 20 years of ANSYS expertise.*



**TwinMesh™ is available for these PD machine types:**

- Screw compressors
- Scroll compressors
- Lobe pumps
- Internal gear pumps
- External gear pumps
- Gerotor pumps
- Screw expanders
- Scroll expanders
- Lobe blowers

